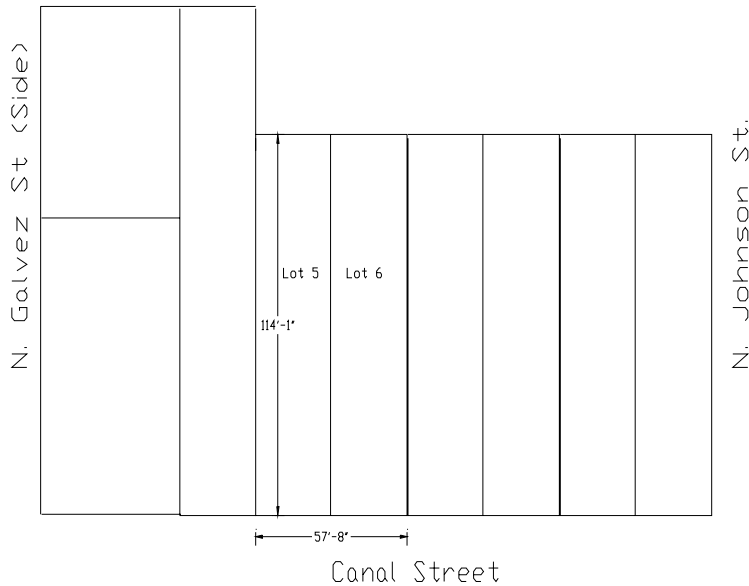


Vacant Land For Lease

2115 Canal Street (Lots 5 & 6 only)



- Land is currently vacant and ready for immediate occupancy
- Lot measures approx. 57'-7" x 114, about 6.600+/- s.f..
- Site has been previously used to store/park vehicles and as a car lot.
- Current zoning is believed to be C-1.
- Offered at \$1,750.00 per month triple net.

E-mail Al Oglesby, **CCIM**, **CPM**[®], **CEA** at Al@alcorgroup.com or call
The **ALCOR** Group for additional information!

Visit our website for drawings and fliers of other offerings at www.alcorgroup.com

This printable flier & drawing, or copies thereof, are to be used for the sole purpose of marketing the associated property under the marketing agreement(s) between The **ALCOR** Group and the Owners of said properties. The **ALCOR** Group grants permission to all for the use of these productions for the marketing of these properties as herein stated only. As these materials have been developed by The **ALCOR** Group, at its expense and without compensation from anyone, they are and will remain the property of The **ALCOR** Group and the copying or use of these materials by anyone for any purpose, other than herein stated, is strictly prohibited under applicable laws, ethics and regulations governing such issues.



4430 S. I-10 Service Road - Metairie, LA 70001
Office (504)-887-2800 - Fax (504) 889-1300
"A FULL SERVICE REAL ESTATE COMPANY"



ST. (SIDE)

IBERVILLE ST
(SIDE)

ST

N. GALVEZ

N. JOHNSON



Survey certified correct. Made at the request of
Vincent Fertitta.

Sq. 275
SECOND DISTRICT

June 11, 1956.
ADLOE ORR, Jr., & ASSOCIATES
CONSULTING ENGINEERS

By Adloe Orr Jr. CE
315 St. Charles Avenue New Orleans, La.