

Kenner Warehouse For Sale/Lease

2247 Aberdeen Street



- New Ludwig warehouse/office (Sept. 2004) consisting of approx. 2,800 total sq. ft.; 1,320 warehouse/ 1,480 s.f. well appointed office space. Zoned Light Industrial (L-I). Additional land may be available.
- Building currently occupied by two (2) tenants (Marine & computer companies) which will relocate within 30 days of signed contract. Extensive computer network cabling in place.
- Warehouse has 17'-6" eave height with two (2) overhead doors and mezzine area suitable for heavy storage or perhaps additional offices.
- Offered for sale at \$250,000.00 or for lease at \$2,450.00 per month triple net.

E-mail Al Oglesby, **CCIM**, **CPM**®, **CEA** at Al@alcorgroup.com or call
The **ALCOR** Group for additional information!

Visit our website for drawings and fliers of other offerings at www.alcorgroup.com

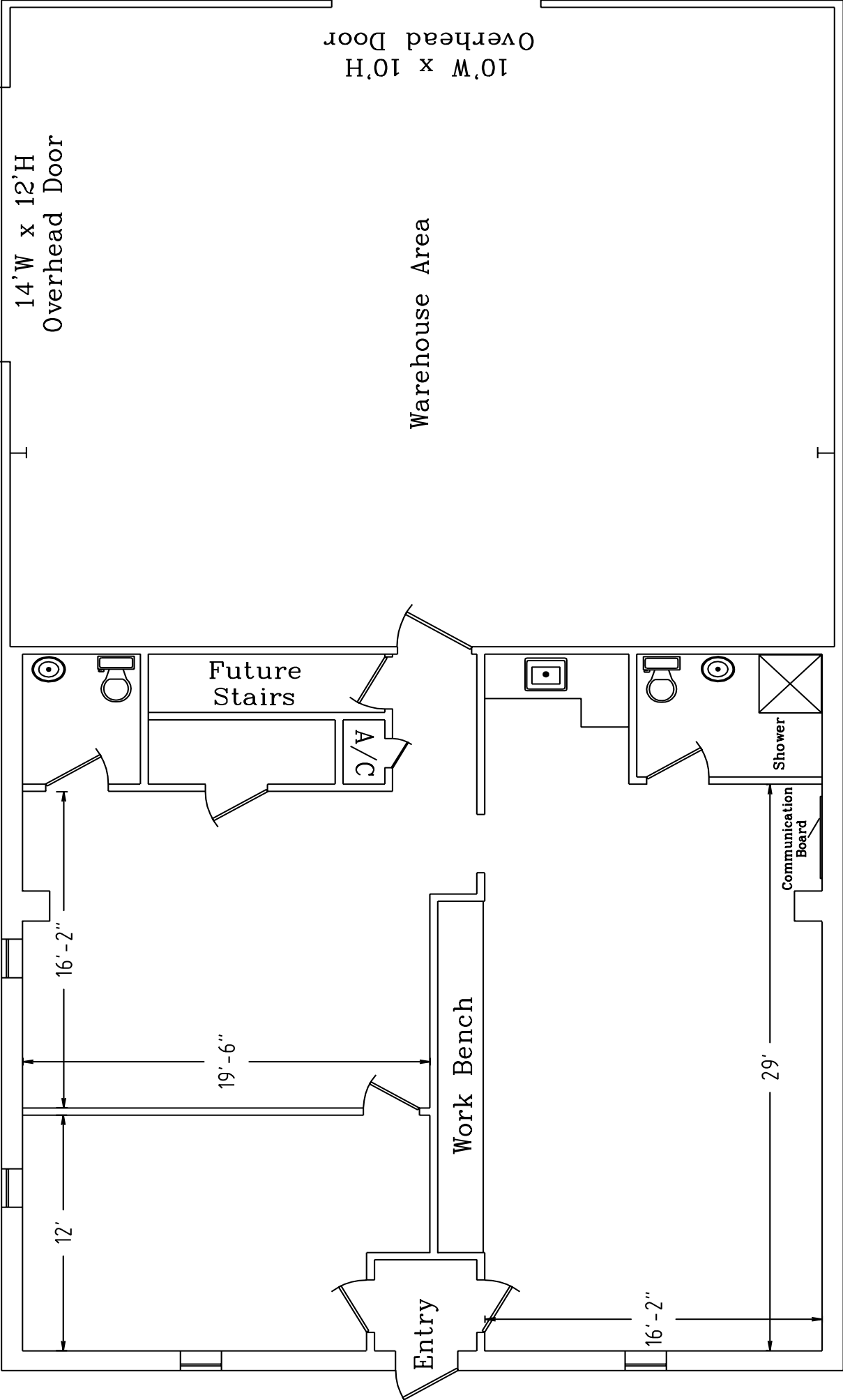
This printable flier & drawing, or copies thereof, are to be used for the sole purpose of marketing the associated property under the marketing agreement(s) between The **ALCOR** Group and the Owners of said properties. The **ALCOR** Group grants permission to all for the use of these productions for the marketing of these properties as herein stated only. As these materials have been developed by The **ALCOR** Group, at its expense and without compensation from anyone, they are and will remain the property of The **ALCOR** Group and the copying or use of these materials by anyone for any purpose, other than herein stated, is strictly prohibited under applicable laws, ethics and regulations governing such issues.



4430 S. I-10 Service Road - Metairie, LA 70001
Office (504)-887-2800 - **Fax** (504) 889-1300
"A FULL SERVICE REAL ESTATE COMPANY"

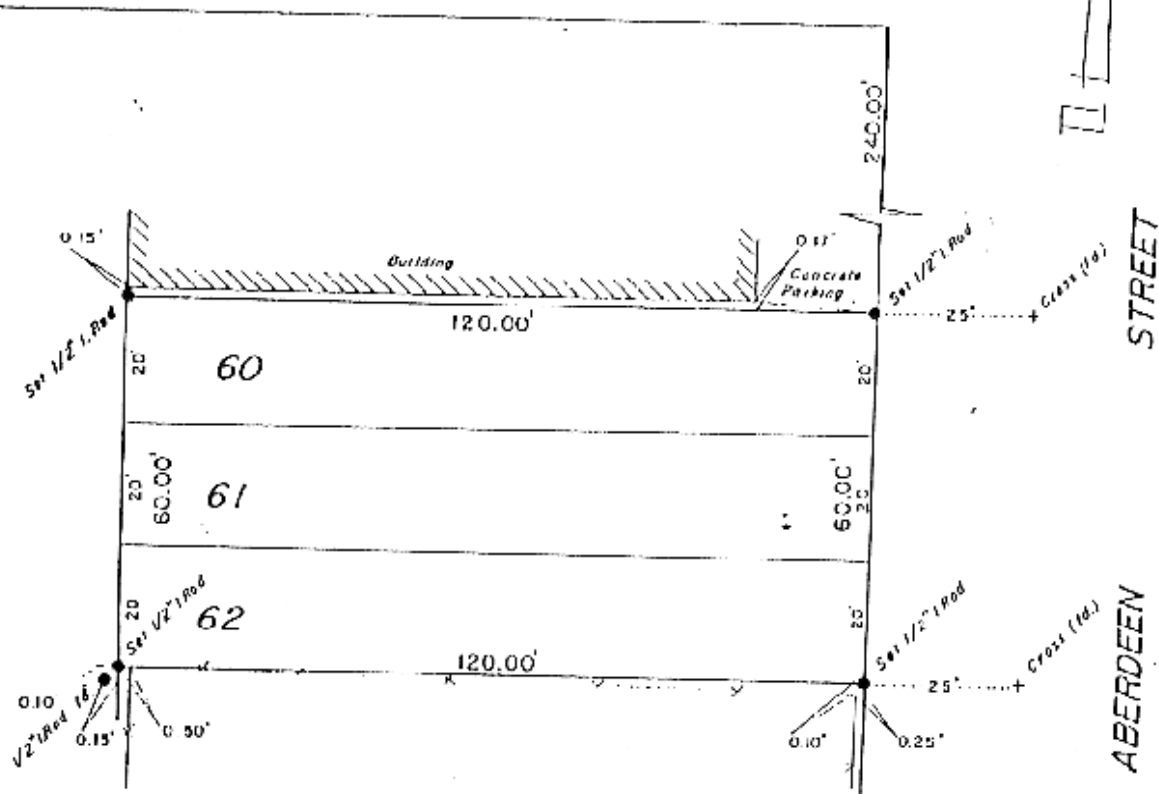


Side Drive



23 RD. STREET
Formerly CHARLOTTE AVENUE

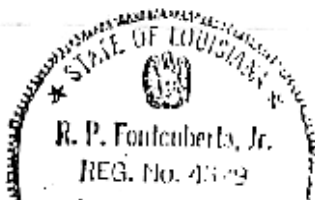
GREENWOOD STREET (SIDE)



22 NO. STREET
Formerly CAMDEN AVENUE (SIDE)

SURVEY OF LOTS 60, 61 & 62
SQUARE 47
CRESTVIEW OFFICE & INDUSTRIAL PARK
(FORMERLY KENNER PROJECT, SECTION 2)
CITY OF KENNER
JEFFERSON PARISH, LA.

CERTIFIED CORRECT TO:
Raymond Keeley



Note: This is to certify that