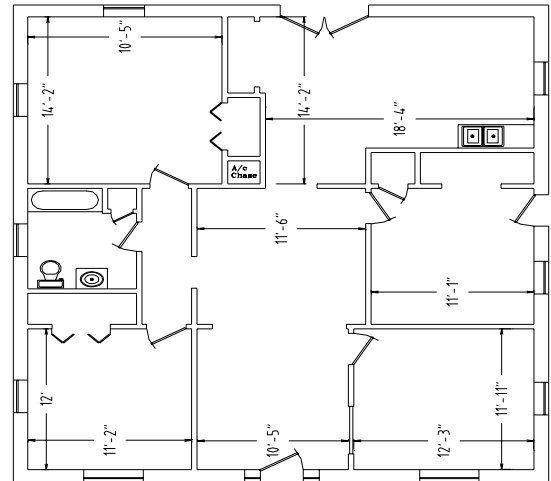


Metairie Office Space For Lease 2412 Athania Parkway (Southside of I-10)



- Single tenant office space consisting of approx. 1,476 s.f. Located off the S. I-10 Service Road near Causway Blvd. Property zoned BC-2.
- Consist of large reception area with 4 private offices, large kitchen/break area, full restroom, and plenty of storage. Previously occupied by Party Center tenant.
- Onsite parking could be expanded to rear yard for qualified Tenant. Landlord maintains landscaping.
- Offered at \$1,476.00 per month net utilities.

Email Travis Oglesby at travis@alcorgroup.com or Al Oglesby, **CCIM**, **CPM**[®], **CEA** at al@alcorgroup.com or call

The **ALCOR** Group for additional information!

Visit our website for drawings and fliers of other offerings at www.alcorgroup.com

This printable flier & drawing, or copies thereof, are to be used for the sole purpose of marketing the associated property under the marketing agreement(s) between The **ALCOR** Group and the Owners of said properties. The **ALCOR** Group grants permission to all for the use of these productions for the marketing of these properties as herein stated only. As these materials have been developed by The **ALCOR** Group, at its expense and without compensation from anyone, they are and will remain the property of The **ALCOR** Group and the copying or use of these materials by anyone for any purpose, other than herein stated, is strictly prohibited under applicable laws, ethics and regulations governing such issues.



Certified
Property
Manager

4430 S. I-10 Service Road - Metairie, LA 70001
Office (504)-887-2800 - Fax (504) 889-1300
"A FULL SERVICE REAL ESTATE COMPANY"

Al Oglesby, **CCIM**, **CPM**[®], **CEA**

