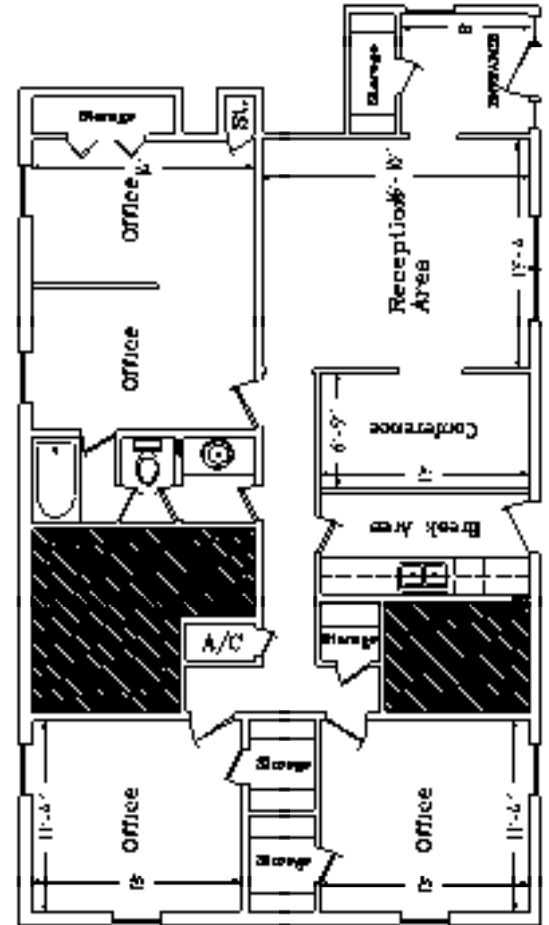


Metairie Office Space For Lease 3013 20th Street, Suite A (off Ridgelake Avenue)



- Approximately 1,680 sf available in this prime Metairie location, available for immediate occupancy.
- Ideally suited for professional office use.
- Located off of Ridgelake Dr., near Veterans and Causeway Blvd., offering easy access from all areas.
- Tenant controlled heating and air conditioning.
- Offered at \$1,275.00 p/month, net electric, water included.

E-mail Al Oglesby, **CCIM**, **CPM**[®], **CEA** at Al@alcorgroup.com or call The **ALCOR** Group for additional information!

Visit our website for drawings and fliers of other offerings at www.alcorgroup.com

This printable flier & drawing, or copies thereof, are to be used for the sole purpose of marketing the associated property under the marketing agreement(s) between The **ALCOR** Group and the Owners of said properties. The **ALCOR** Group grants permission to all for the use of these productions for the marketing of these properties as herein stated only. As these materials have been developed by The **ALCOR** Group, at its expense and without compensation from anyone, they are and will remain the property of The **ALCOR** Group and the copying or use of these materials by anyone for any purpose, other than herein stated, is strictly prohibited under applicable laws, ethics and regulations governing such issues.



4430 S. I-10 Service Road - Metairie, LA 70001
Office (504)-887-2800 - **Fax** (504) 889-1300
"A FULL SERVICE REAL ESTATE COMPANY"

