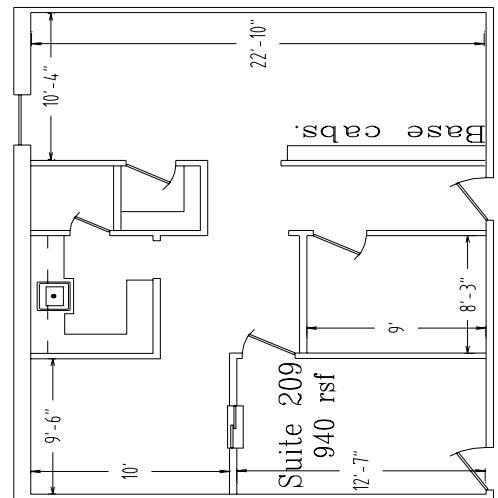


Metairie Office Space For Lease

3100 Ridgelake, Suite 209 (near Causeway & Vets)



- Approx. 940 rsf office space ready for immediate occupancy.
- Previously used as dental office, second floor (bldg. has elevator) space consists of reception area with pass-through window, private office, large dental area with lab and storage areas.
- Located in the heart of Metairie just off Causeway & Veterans Blvd. with 24 hour access, 7 days a week.
- Centrally located with easy access from all surrounding areas.
- Offered at \$1,136.00 per month including utilities.

E-mail Al Oglesby, **CCIM**, **CPM**®, **CEA** at Al@alcorgroup.com or call The **ALCOR** Group for additional information!

Visit our website for drawings and fliers of other offerings at www.alcorgroup.com

This printable flier & drawing, or copies thereof, are to be used for the sole purpose of marketing the associated property under the marketing agreement(s) between The **ALCOR** Group and the Owners of said properties. The **ALCOR** Group grants permission to all for the use of these productions for the marketing of these properties as herein stated only. As these materials have been developed by The **ALCOR** Group, at its expense and without compensation from anyone, they are and will remain the property of The **ALCOR** Group and the copying or use of these materials by anyone for any purpose, other than herein stated, is strictly prohibited under applicable laws, ethics and regulations governing such issues.



Certified
Property
Manager

4430 S. I-10 Service Road - Metairie, LA 70001
Office (504)-887-2800 - **Fax** (504) 889-1300
"A FULL SERVICE REAL ESTATE COMPANY"

Al Oglesby, **CCIM**, **CPM**®, **CEA**

