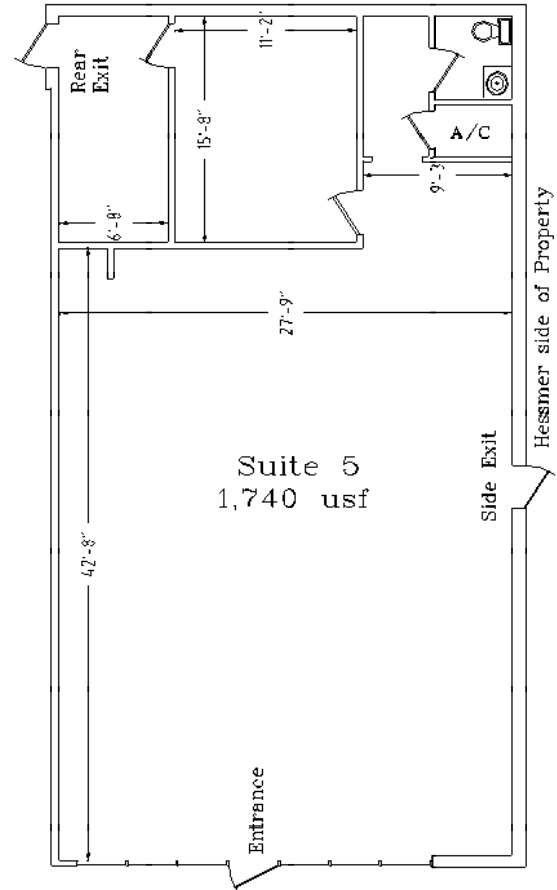


Prime Metairie Retail/Office Space For Lease 3544 W. Esplanade, Suite 5



- Approx. 1,740 s.f. (end cap) available for immediate occupancy.
- Recently renovated retail center located at the corner of W. Esplanade. Hessmer Avenue in the heart of Metairie.
- Existing tenants included Chateau Drug Store, Salon, Dry Cleaner, Frame Shop and Chiropractic office.
- Plenty of on-site parking.
- Offered at \$3,000.00 net electric & \$3.36 psf CAM & \$35.00 per month water.

E-mail Al Oglesby, **CCIM**, **CPM**[®], **CEA** at Al@alcorgroup.com or call
The **ALCOR** Group for additional information!

Visit our website for drawings and fliers of other offerings at www.alcorgroup.com

This printable flier & drawing, or copies thereof, are to be used for the sole purpose of marketing the associated property under the marketing agreement(s) between The **ALCOR** Group and the Owners of said properties. The **ALCOR** Group grants permission to all for the use of these productions for the marketing of these properties as herein stated only. As these materials have been developed by The **ALCOR** Group, at their its expense and without compensation from anyone, they are and will remain the property of The **ALCOR** Group and the copying or use of these materials by anyone for any purpose, other than herein stated, is strictly prohibited under applicable laws, ethics and regulations governing such issues.



Certified
Property
Manager

4430 S. I-10 Service Road - Metairie, LA 70001
Office (504)-887-2800 - Fax (504) 889-1300
"A FULL SERVICE REAL ESTATE COMPANY"

