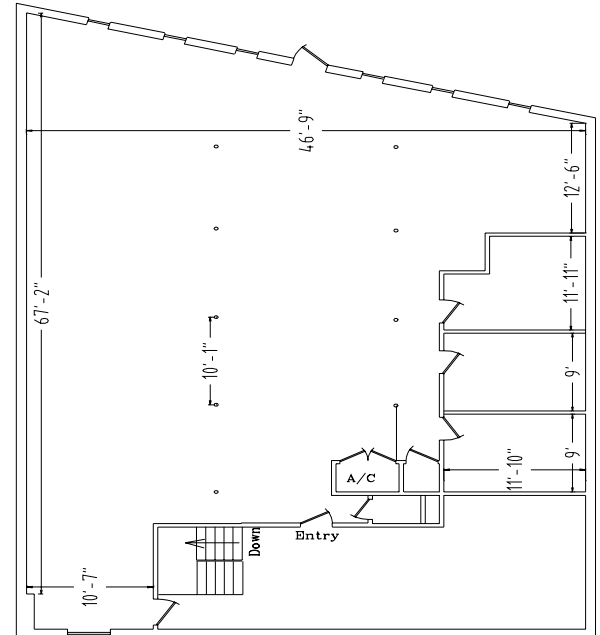


## Metairie Office Space For Lease 4608 Rye Street



- Second floor (walk-up) office space consisting of approx. 3,078 rsf. near Clearview & I-10 intersection.
- Space basically consists of large open area with three private offices.
- Tenant control air and heating with shared break area and rest rooms in common area.
- Plenty of on-site surface parking.
- Offered at \$3,078.00 per month net electric.

E-mail Al Oglesby, **CCIM**, **CPM**<sup>®</sup>, **CEA** at [Al@alcorgroup.com](mailto:Al@alcorgroup.com) or call The **ALCOR** Group for additional information!

Visit our website for drawings and fliers of other offerings at [www.alcorgroup.com](http://www.alcorgroup.com)

This printable flier & drawing, or copies thereof, are to be used for the sole purpose of marketing the associated property under the marketing agreement(s) between The **ALCOR** Group and the Owners of said properties. The **ALCOR** Group grants permission to all for the use of these productions for the marketing of these properties as herein stated only. As these materials have been developed by The **ALCOR** Group, at its expense and without compensation from anyone, they are and will remain the property of The **ALCOR** Group and the copying or use of these materials by anyone for any purpose, other than herein stated, is strictly prohibited under applicable laws, ethics and regulations governing such issues.



4430 S. I-10 Service Road - Metairie, LA 70001  
**Office (504)-887-2800 - Fax (504) 889-1300**  
"A FULL SERVICE REAL ESTATE COMPANY"

