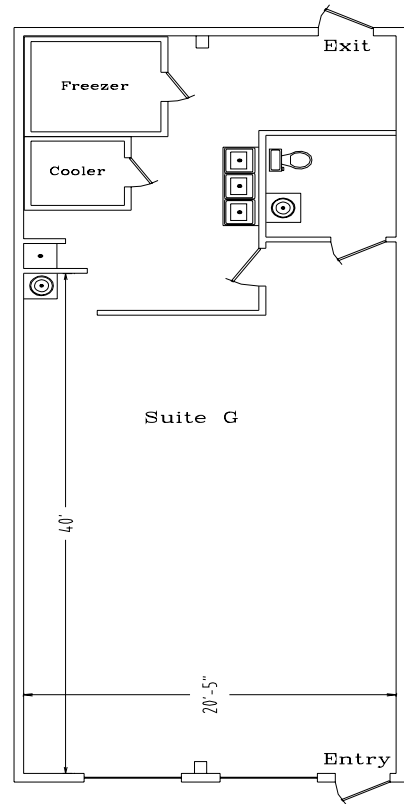


Metairie Retail Space Available 701 David Drive, Suite G



- Recently renovated from the ground up including parking lot and landscaping. Space consist of approx. 1,264 rsf, most recently a sub sandwich franchise.
- Ideal for retail, cafe/deli, professional or medical office.
- Near Walgreen's at the intersection of David Dr. and W. Metairie Avenue across from Jefferson Parish Courthouse. 28,700 vehicles per day (combined daily traffic count).
- Offered at \$15.50 psf, triple net . Call for additional details.

E-mail Jay Plaia at Jay@alcorgroup.com or call
The **ALCOR** Group for additional information!

Visit our website for drawings and fliers of other offerings at www.alcorgroup.com

This printable flier & drawing, or copies thereof, are to be used for the sole purpose of marketing the associated property under the marketing agreement(s) between The **ALCOR** Group and the Owners of said properties. The **ALCOR** Group grants permission to all for the use of these productions for the marketing of these properties as herein stated only. As these materials have been developed by The **ALCOR** Group, at its expense and without compensation from anyone, they are and will remain the property of The **ALCOR** Group and the copying or use of these materials by anyone for any purpose, other than herein stated, is strictly prohibited under applicable laws, ethics and regulations governing such issues.



Certified
Property
Manager

4430 S. I-10 Service Road - Metairie, LA 70001
Office (504)-887-2800 - Fax (504) 889-1300
"A FULL SERVICE REAL ESTATE COMPANY"

