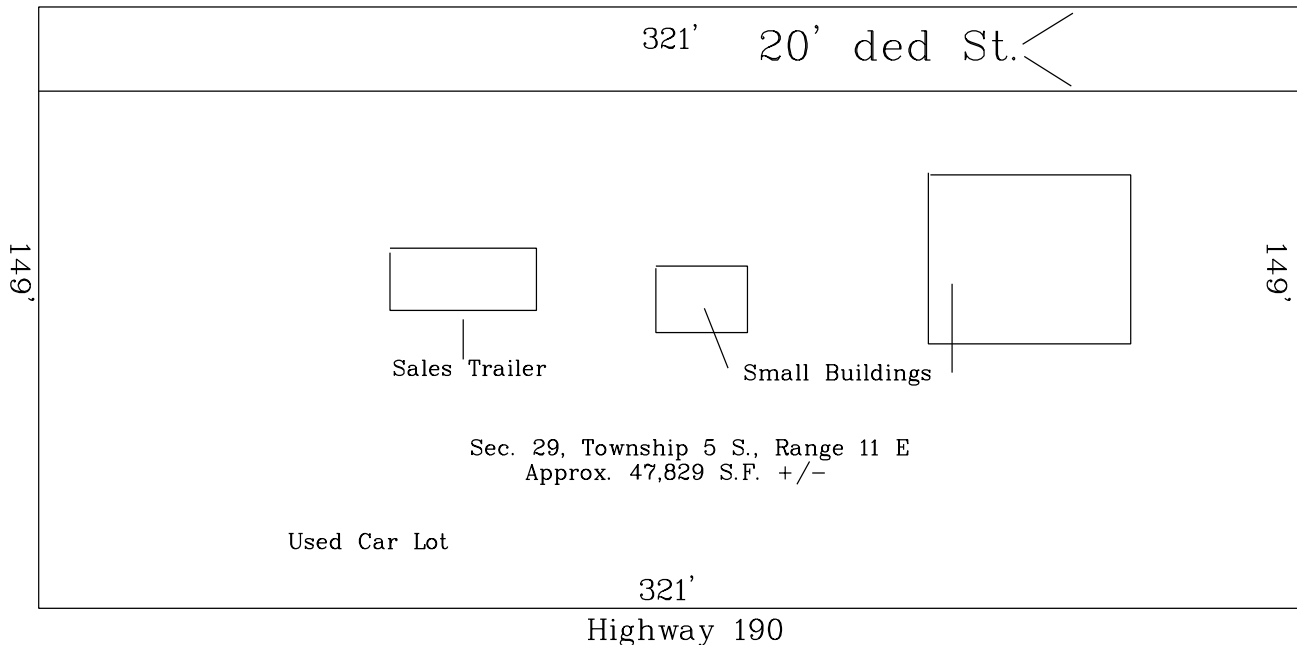


## Covington Vacant Land For Lease

On Hwy 190, North of I-12 (1300 block)



- Approximately 47,829 sf of vacant land, no sign on property.
- Offers 321' frontage along Hwy. 190 with 149' depth. Print flier for clear view of site plan..
- Zoned C-2
- Great retail development site.
- Offered at \$14,500.00 per month net taxes and insurance.

E-mail Al Oglesby, **CCIM**, **CPM**®, **CEA** at [Al@alcorgroup.com](mailto:Al@alcorgroup.com) or call  
The **ALCOR** Group for additional information!

Visit our website for drawings and fliers of other offerings at [www.alcorgroup.com](http://www.alcorgroup.com)

This printable flier & drawing, or copies thereof, are to be used for the sole purpose of marketing the associated property under the marketing agreement(s) between The **ALCOR** Group and the Owners of said properties. The **ALCOR** Group grants permission to all for the use of these productions for the marketing of these properties as herein stated only. As these materials have been developed by The **ALCOR** Group, at its expense and without compensation from anyone, they are and will remain the property of The **ALCOR** Group and the copying or use of these materials by anyone for any purpose, other than herein stated, is strictly prohibited under applicable laws, ethics and regulations governing such issues.



Certified  
Property  
Manager

4430 S. I-10 Service Road - Metairie, LA 70001  
**Office (504)-887-2800 - Fax (504) 889-1300**  
**"A FULL SERVICE REAL ESTATE COMPANY"**

Al Oglesby, **CCIM**, **CPM**®, **CEA**



Individual  
Member