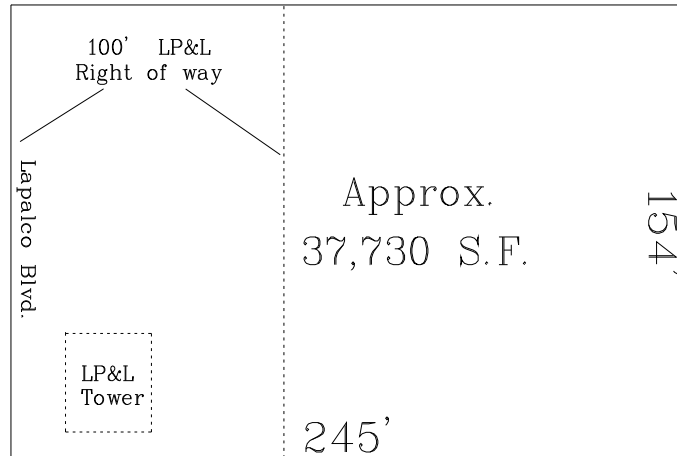


Marrero Development Site For Sale/Lease Located on Lapalco between Ames and Barateria Blvd. Across from the new Post Office



- The site is located in Marrero across from the Schegmann's Super Market and new post office between Ames and Barateria Blvd.
- The property consist of approx. 37,730 +/- sf with approx. 154' of frontage on Lapalco.
- The site is offered for sale or lease and is zoned MUCD.
- Offered at \$395,000.00 or \$3,291.00 per month land lease.

E-mail Al Oglesby, **CCIM**, **CPM**®, **CEA** at Al@alcorgroup.com
or call The **ALCOR** Group for additional information!

Visit our website for drawings and fliers of other offerings at www.alcorgroup.com

This printable flier & drawing, or copies thereof, are to be used for the sole purpose of marketing the associated property under the marketing agreement(s) between The **ALCOR** Group and the Owners of said properties. The **ALCOR** Group grants permission to all for the use of these productions for the marketing of these properties as herein stated only. As these materials have been developed by The **ALCOR** Group, at its expense and without compensation from anyone, they are and will remain the property of The **ALCOR** Group and the copying or use of these materials by anyone for any purpose, other than herein stated, is strictly prohibited under applicable laws, ethics and regulations governing such issues.



Certified
Property
Manager

4430 S. I-10 Service Road - Metairie, LA 70001
Office (504)-887-2800 - Fax (504) 889-1300
"A FULL SERVICE REAL ESTATE COMPANY"



Individual
Member

